

Dear Parents & Carers,

Another half term seems to have gone by in a flash, but reading through the newsletter is always a great way to remind us about the amazing activities our students have enjoyed.

Despite the rainy and chilly weather, it's good to see how much the students have been encouraged to get out and about, both in our own Forest School and play areas, but also to experience a range of off-site provisions and activities that add to their learning and life skills.



This next Summer term will be particularly exciting for some of our older students, who will be sitting GCSEs and Functional Skills exams in a range of subjects, and preparing to move onto the next stage of their lives, with support from staff at SFIT and at the Life Chance Trust. I'm sure you'll join me in wishing them good luck for next term!

Please don't forget that we do have an extra bank holiday on 8th May, to celebrate the Coronation of our new King. Added to the usual Bank Holidays, this will give us all some long weekends in May, so let's hope for some sunny weather!

Wishing you all a restful Easter break,  
**Pete Jenkins,**  
Principal

## NEW STARTERS

We welcomed the following new staff to the school:



**Jerry de  
Freyne-Martin**  
*Learning Support Assistant*



**Claire Fleshbourne**  
*Learning Support Assistant*



**Rachel Teare**  
*Learning Support Assistant*



**Katie Macmanus**  
*Learning Support Assistant  
(LT supply)*

A MESSAGE FROM LEWIS HARBEN



Here we are, two-thirds of the way through the school year and approaching the Easter holidays!

This term we have continued to build relationships with local providers and services with students attending weekly sessions at 'A Kind of Magic Animal Centre' and the Donkey Sanctuary in Ivybridge. Our students who have been visiting 'A Kind of Magic Animal Centre' have played a key part in caring for a wide range of animals from chickens to goats and even looking after a pregnant guinea pig! The Donkey Sanctuary have

provided a range of courses dependent on student's needs which support 'the development of people's life skills and wellbeing, helping individuals to better deal with challenges in everyday life, while also promoting positive attitudes towards donkeys'.

Although the students continue to enjoy our garden, adventure playground and forest school areas whatever the weather, we are very much looking forward to some brighter weather and hopefully a drier spell to maximise the range of games and activities that we can offer outside!

Have a great Easter and we look forward to welcoming all students back into school on Monday 17th April.

Lewis Harben & the College House Team.



FOREST SCHOOL - KATIE MAKINSON

What a wet and muddy Forest School we have had this term! We've had so much fun splashing and splashing in the mud pit, not caring about how muddy we get (as long as we have a change of clothes). Students have been inventing lots of great games, demolishing loads of pallets for firewood, building new dens, practising their balancing skills on the slack line and watching for the baby pigeons to be seen in the nest.

We've been cooking some delicious food such as cowboy beans, chow mien, tacos and lots more tasty treats but the main attraction this term has been the mud restaurant we have set up. Every day I get fed some amazing dishes; lavender and courgette soup, chocolate mousse with chocolate shavings and refreshing ice cream soda drinks being some of favourites so far.

It's so great to see the students play so freely and joining together as a team to run the restaurant, even when the customers can be a bit awkward sometimes!





## SMOO CLASS

Smoo Class have been very busy this half term!

We have continued with our daily Read Write Inc. and I am so proud of how far the students have come on with their reading.

We have also been working hard at developing friendships by playing lots of fun games like football.

In RE, we have been learning all about the Easter Story and have created some wonderful pieces of art to compliment this. As scientists, we have been exploring different materials and completed a very fun experiment using eggs! As mathematicians, we have worked super hard at fractions this half term and even made some special fraction pizzas!



## BEAST QUEST CLASS

This half-term we have been reading a wonderful book by Clotilde Perrin called "Inside the villains" which explores the wolf, the giant and the witch who we find in so many classic fairytales. It has been wonderful to see the children explore and engage in a beautifully crafted pop-up book!

The boys have had a taste of geography as we identified continents, oceans and countries with a particular focus on the countries that make up the UK.

In Science we explored materials and predicted which materials dissolve in water.

Some sunnier days have seen us getting out and about and exploring the newly regenerated park just a five minute walk from school. A great space at our fingertips for letting out energy and engaging with the community.

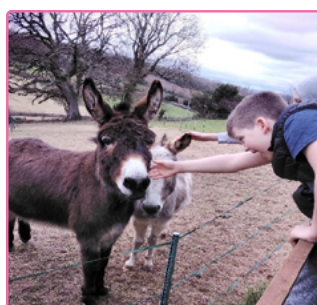
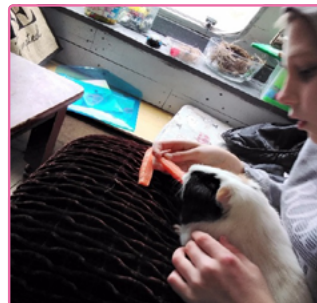


## COBRA CLASS

This half term Cobra have had the opportunity of accessing an amazing local Animal Centre, called A Kind of Magic.

The centre is set up on a small-holding and offers a calm and peaceful environment that provides animal and nature-based activities.

Clair Fynn, who owns the centre, is a qualified early years teacher and has a wealth of knowledge and experience to plan and support how our students can improve their social, emotional, and physical well-being as well as their maths, literacy, science, and wider curriculum skills.



## ASGARD CLASS

Asgard have had another brilliant Half Term - it has been a very busy one with lots to celebrate.

We have welcomed new pupils and waved goodbye to pupils who have transitioned across to our other school site. We have also been very productive in and outside of the classroom.

This Half Term we have primarily focussed on Maths, English and PSHE lessons. Maths in particular has been a real success story with pupils gaining an understanding

around basic algebraic principles and extending their times tables work in lessons.

Outside of the school site we have engaged in Equifinity, indoor rock climbing and music with Sound Communities as well as visits to the Donkey Sanctuary.

Asgard class seem to all be talented in the kitchen so our catering/ BTEC catering sessions are always looked forward to by pupils and staff alike.

After Easter we look forward to using the outdoor spaces available at school and extending out learning in English, Maths and PSHE lessons.

Well done Asgard, keep up the good work!



## SEUSS CLASS

Writing - this term we have based our writing around the text 'Rainforest rough guide.' We have researched at a range of animals that live in the Amazon Rainforest and thought about why some are becoming endangered.

To consolidate our learning, we went on a trip to Dartmoor Zoo and handled some of the animals there!

Science - We have been learning about the three different types of rocks - metamorphic, sedimentary and igneous. Seuss class have explored different types of rocks and have discussed the different properties that they have. We have been learning about how fossils are formed and had a go at casting our own fossils!

Craft - We have made some fantastic purses this term and have shown determination when threading a needle! Seuss class have demonstrated patience when sewing neatly to make sure that the contents remain inside the purse.

Mental Health Week - We explored what the inside of the brain is like and how important the amygdala is when controlling different emotions. We discussed how the brain is protected and did an experiment with eggs to prove this.





## A MESSAGE FROM LUCY GRELEN

This has been a short but really productive half term at Place House.

The children have welcomed a new student into the Year 9 class and a Year 10 student has moved from College House to the Year 10 class and both students are settling in well.



The Year 11 class have an additional Learning Support Assistant called Claire, who is a fantastic support to the children and to Issy (their class teacher) and the wider team.

Sound Communities are working with the children twice a week. This term the Year 7 and 8 children have completed their projects and it is now the turn of Year 9 and 10 to enjoy the many different options to explore music and film with the team.

Saints Southwest continue to come and support sports and activities every Wednesday lunchtime, providing new opportunities and games for children to play together outside, whatever the weather.

The Year 10 children have been off site for week of work experience, working placements are taking place in many different places, for example: a primary school, a rugby club, a cafe and a hairdressing salon.

The staff who support the KS4 classes have been completing weekly training to be able to deliver Functional Skills qualifications and GCSE exams this summer. The Year 11 completed 4 days of exams from the 20th to 23rd March, and then spent the Friday visiting Bicton College to consider options and courses for post 16.

You will all know already that this is my last term at SFIT. I am going to be working with similar children in a setting much closer to home. I would like to say how much I have enjoyed working with you and your children and to thank you for all your support over the years. I hope you have a restful Easter break.

Lucy Greden and the Place House Team

## LIONS CLASS

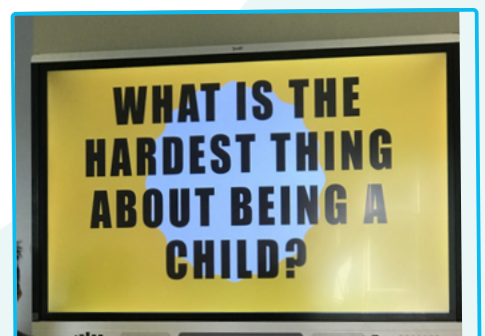
Year 7 have had an amazing term with lots of learning and fun! In English we have seen huge improvements in their Lightning writes with more being written each week!

In Maths they have been looking at fractions, decimals, and percentages in which they have all excelled at individually. Next Term we will be looking at Algebra!

Year 7 have had some great P4C conversations where the students have learnt to add, build and challenge on each other's opinions.

We have had so much fun in Forest School making dens and lots of delicious food. Their Forest Skills have grown so much with them leading their own lesson making delicious jacket potatoes!

Another great term and we hope everyone gets a well-earned rest over the Easter holidays!



## PARRETT / YEAR 10 CLASS

For the first time in SfIT history, we have had an entire class of students prepare and take part in work experience. To get ready for this marvellous opportunity, we have spent the first half of the term learning interview skills, visiting places of work, learning work based social skills and how to communicate our needs in a workplace.

For the week's work experience, year 10 worked in primary schools, nurseries, cafes, kitchens, rugby clubs, hairdressers, IT providers and maintenance teams. They have all made outstanding progress even though they find the working day much more tiring than school...!

The Year 10 team have very much enjoyed visiting the various establishments, especially eating carefully prepared cakes and being served delightful hot chocolates, and we look forward to running a similar programme next year. Please do get in touch if you know a company who might offer one of our wonderful students work experience.

Year 10 have had an amazing term and we wonder what great things they achieve next. #Progress!



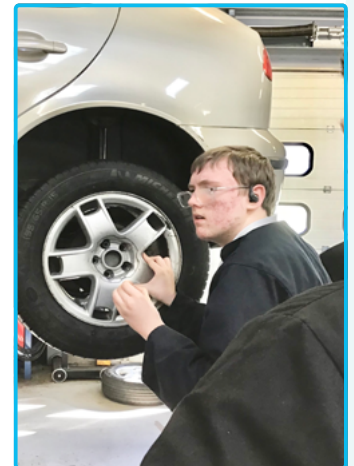
## GRYFFINDOR CLASS

This term in year 9, we have had a blast!

From trips out to Stover Country Park, to lots of forest school fun. And from some excellent resilience in outdoor play, to some creative and extraordinary art sessions. Year 9 have all worked so hard in all of their learning, and haven't given up when things have gotten tough.

This term at Combe Pafford, year 9 have been participating in mechanics. This has been great. Year 9 have also participated in brain awareness week, which encouraged students to get stuck in talking about their feelings and emotions. Year 9 are always willing to get stuck into new challenges and really push themselves.

Well done everybody! You are all great and make us proud every day.



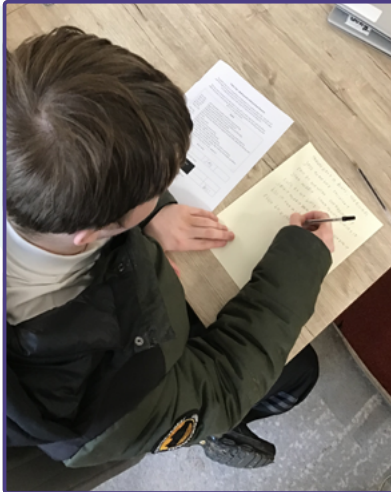


## DART CLASS

Year 11 have had a really busy term, filled with college visits, exams and end of school preparation. The boys have all finished their last set of Functional Skills exams, and we look forward to hearing back about their results. We now are focused on preparing for our GCSEs; our science qualification will be completed by 31st March.

We have also visited South Devon College and Bitcoin College this half term, and the boys are all planning and looking forward to their transitions to their post-16 placements. Some of them even appeared in a video for Life Chance Trust talking about the support they might need in future.

Some of year 11 have begun a very successful Dungeons and Dragons club run by Leo as Dungeon Master. This is open for all students and has been thoroughly enjoyed by all attendees. This has inspired staff to think further about lunchtime clubs that we can run to engage a wider group of students!



## SKY CLASS

This term year 8 have enjoyed making a variety of foods in Forest School, including chilli dogs.

We have also been working hard on our friendships by playing some team-building games including 'deal or no deal' and spaghetti and marshmallow tower building. Here are some of the highlights of our term!



**Optimus Award for Wellbeing & Mental Health:**



On the 10th February, we had our Interim Assessment with Clare from Optimus Wellbeing Award for Schools. As you will be aware, this is an award that we have been working towards over the last year.

After consulting with students, staff and parents/carers through the initial survey, we put an action plan in place to demonstrate all the things we

do every day to promote positive wellbeing.

Through this process, we also found some ways in which we could improve our wellbeing offer for our whole school community. One of the many ways in which we achieved this was through the student council - we are so proud of how our student council has developed and can't wait to see what positive changes they can make in the future.

We are happy to say that we achieved the Wellbeing Award for Schools and plan to continue to make wellbeing a priority.

Megan, our Mental Health and Wellbeing Lead, is going off on maternity leave for a while but is confidently leaving our brilliant Wellbeing Action Team to keep things moving forward.

If you have any ideas for wellbeing across the school, please do contact us at: [info@sfit.org.uk](mailto:info@sfit.org.uk)

**Megan Harben**



**BEING THE BEST WE CAN BE!**

**Student Feedback & Actions - Spring 2023**

	<b>What you said...</b>	<b>What we've done so far...</b>
<b>School Environment</b>	Both school sites have problems with rooms being too hot or too cold.	The Maintenance team are reviewing this, and Pete Jenkins is considering plans for the Summer.
	Some classes at College House asked for Mag Locks on their doors.	Mag locks have now been fitted where requested - if yours hasn't been fitted yet, it's on the list to do.
	We would like more things to do in our outdoor space.	The outdoor adventure play is a great success across both sites. We are continuing to develop our outdoor play offer, working with a company called OPAL - you'll see more equipment and options become available this term.
	We'd like to know when fire alarms will be going off (fire drill).	Lewis Harben will be running a trial, to warn College House students when there is to be a fire drill. But sometimes the alarms go off by accident - and this can't be helped!
	Student representatives say they are concerned about the school environment at Place House - particularly things being damaged and broken.	Our Maintenance team work hard to improve our schools. Staff will support you and ensure our environment is safe and pleasant BUT it is also the responsibility of students to ensure it stays that way!
<b>Student Wellbeing</b>	Student behaviour impacts everyone. Students would like more information about how decisions are made about responses to student behaviour.	We have a new relational behaviour policy which will be shared with you in your classes.
	Students need more understanding & support around why and how staff may support them safely when they are dysregulated.	George Franklin & Pete Bilham now have specific job roles to support with this and help staff and students reflect on any incidents.
	Students would like dedicated Key Worker time.	The Senior Leadership Team have been made aware of this and are thinking about how this could work.
<b>Curriculum</b>	We'd like more lessons and support on sexuality, gender, discrimination and bullying.	This is delivered through the PSHE curriculum - if you have any specific things you'd like to talk about, please ask your teacher.
	We'd like a review of school furniture - tables and chairs are not the right height or are uncomfortable.	Our Occupational Therapist (Janelle Penfold) is completing a review of school equipment and will be making recommendations.
	Some of us want lunch time groups and activities.	Saints South West have been providing lunch time activity groups over the past few months, which is going well! The Senior Leadership Team are looking at other groups and clubs for lunch times.
<b>Staff</b>	It doesn't feel like there are enough staff across both sites.	We have been working hard on recruiting new staff over the last couple of months and this will continue until we are fully staffed.

Please speak to your teacher about individual class feedback which covers all of the items raised by your student council representative. Thanks to our Student Council for providing us with feedback to help us make our school even more AMAZING!!!!





What an exciting half term it has been here at Life Chance Trust, starting to move forward with our young people!

Our young board are now called our Every Chance Panel and consists of 5 young people who are extremely motivated and passionate about working alongside the charity to help shape it by being a voice. They have been meeting regularly with Chloe to tell us what they want to see for the young people we are beginning to mentor. We still have space for 5 more young people if you know of anyone who might be interested!

*“Through joining the Life Chance Trust as a young advisor, I aim to share wisdom from my own struggles and understanding to support the services provided to young people. I am excited to build and grow with this newfound community and help make a difference to young people’s lives” – Luella.*

We had our first Board of Trustees away day which was extremely successful. Having both our trustees and young people all together in the same room means we were able to discuss and plan next steps, with everyone’s voices being heard.

*“The best thing? Bringing everyone together and getting stuck into the important questions as we move forward”.*

Our website is up and running with new opportunities being posted regularly, information about the charity, and a bit about all the individuals who are involved in the trust. We also had some of the year 11 students help us create a video for some funding we applied for from KFC. They were brilliant and having them involved in this side of the charity means we can receive funding to expand the charity to reach young people even further. Have look here: <https://lifechancetrust.org.uk/what-do-we-do/>

We are now recruiting for mentors to join us at Life Chance Trust. These individuals will play an integral part in our mentoring plus programme and you will work side by side a young person to make a difference. We would really love it if everyone could spread the word about this opportunity, as the more mentors we have on board, the more young people we can support. Here is a link to our advert: <https://lifechancetrust.org.uk/about/work-for-us/>

We’ve had some great successes with applications for grants to support mentoring and life skills group sessions and out wider work:

£1725 from the Norman Family Charitable Trust, based in Budleigh Salterton

£1500 from a national trust, the Edgar Lawley Foundation

£1000 from Persimmon Homes Foundation (they’re popping in to College House next week)

£1000 from Devon County Council’s Growing Communities programme.

£500 from Devon Contract Waste to sponsor our runners in the Great West Run and RunPlymouth

And finally, Life Chance Director and Trust Chair Judith Johnson made a personal donation of £500 to boost our fundraising achievements for the year – a huge thank you!

Happy Easter from everyone here at Life Chance Trust!

# Term Dates 2022 / 2023

**September 2022**

Mon	Tue	Wed	Thu	Fri	Sat	Sun
29	30	31	1	2	3	4
5	6	7	8	9	10	11
12	13	14	15	16	17	18
19	20	21	22	23	24	25
26	27	28	29	30	1	2

**October 2022**

Mon	Tue	Wed	Thu	Fri	Sat	Sun
26	27	28	29	30	1	2
3	4	5	6	7	8	9
10	11	12	13	14	15	16
17	18	19	20	21	22	23
24	25	26	27	28	29	30
31	1	2	3	4	5	6

**November 2022**

Mon	Tue	Wed	Thu	Fri	Sat	Sun
31	1	2	3	4	5	6
7	8	9	10	11	12	13
14	15	16	17	18	19	20
22	23	24	25	26	27	
28	29	30	1	2	3	4
5	6	7	8	9	10	11

## Term Lengths

- Autumn Half Term
- 7 Sep - 14 Oct
- Half Term to Christmas
- 31 Oct - 16 Dec
- Winter Half Term
- 4 Jan - 10 Feb

**December 2022**

Mon	Tue	Wed	Thu	Fri	Sat	Sun
28	29	30	1	2	3	4
5	6	7	8	9	10	11
12	13	14	15	16	17	18
19	20	21	22	23	24	25
26	27	28	29	30	31	1
2	3	4	5	6	7	8

**January 2023**

Mon	Tue	Wed	Thu	Fri	Sat	Sun
27	28	29	30	31	1	2
2	3	4	5	6	7	8
9	10	11	12	13	14	15
16	17	18	19	20	21	22
23	24	25	26	27	28	29
30	31	1	2	3	4	5

**February 2023**

Mon	Tue	Wed	Thu	Fri	Sat	Sun
30	31	1	2	3	4	5
6	7	8	9	10	11	12
13	14	15	16	17	18	19
20	21	22	23	24	25	26
27	28	1	2	3	4	5
6	7	8	9	10	11	12

- Half Term to Easter
- 20 Feb - 31 Mar
- Spring Half Term
- 17 Apr - 26 May
- Summer Half Term
- 5 Jun - 21 Jul

**March 2023**

Mon	Tue	Wed	Thu	Fri	Sat	Sun
27	28	1	2	3	4	5
6	7	8	9	10	11	12
13	14	15	16	17	18	19
20	21	22	23	24	25	26
27	28	29	30	31	1	2
3	4	5	6	7	8	9

**April 2023**

Mon	Tue	Wed	Thu	Fri	Sat	Sun
27	28	29	30	31	1	2
3	4	5	6	7	8	9
10	11	12	13	14	15	16
17	18	19	20	21	22	23
24	25	26	27	28	29	30
1	2	3	4	5	6	7

**May 2023**

Mon	Tue	Wed	Thu	Fri	Sat	Sun
24	25	26	27	28	29	30
1	2	3	4	5	6	7
8	9	10	11	12	13	14
15	16	17	18	19	20	21
22	23	24	25	26	27	28
29	30	31	1	2	3	4

**June 2023**

Mon	Tue	Wed	Thu	Fri	Sat	Sun
29	30	31	1	2	3	4
5	6	7	8	9	10	11
12	13	14	15	16	17	18
19	20	21	22	23	24	25
26	27	28	29	30	1	2
3	4	5	6	7	8	9

**July 2023**

Mon	Tue	Wed	Thu	Fri	Sat	Sun
26	27	28	29	30	1	2
3	4	5	6	7	8	9
10	11	12	13	14	15	16
17	18	19	20	21	22	23
24	25	26	27	28	29	30
31	1	2	3	4	5	6

**August 2023**

Mon	Tue	Wed	Thu	Fri	Sat	Sun
31	1	2	3	4	5	6
7	8	9	10	11	12	13
14	15	16	17	18	19	20
21	22	23	24	25	26	27
28	29	30	31	1	2	3
4	5	6	7	8	9	10

## Key

-  Holiday
-  Bank Holiday



# Term Dates 2023 / 2024

**September 2023**

Mon	Tue	Wed	Thu	Fri	Sat	Sun
38	29	30	31	1	2	3
4	5	6	7	8	9	10
11	12	13	14	15	16	17
18	19	20	21	22	23	24
25	26	27	28	29	1	2

**October 2023**

Mon	Tue	Wed	Thu	Fri	Sat	Sun
26	27	28	29	30	1	2
2	3	4	5	6	7	8
9	10	11	12	13	14	15
16	17	18	19	20	21	22
23	24	25	26	27	28	29
30	31	1	2	3	4	5

**November 2023**

Mon	Tue	Wed	Thu	Fri	Sat	Sun
30	31	1	2	3	4	5
6	7	8	9	10	11	12
13	14	15	16	17	18	19
20	21	22	23	24	25	26
27	28	29	30	1	2	3
4	5	6	7	8	9	10

**December 2023**

Mon	Tue	Wed	Thu	Fri	Sat	Sun
27	28	29	30	1	2	3
4	5	6	7	8	9	10
11	12	13	14	15	16	17
18	19	20	21	22	23	24
25	26	27	28	29	30	31
1	2	3	4	5	6	7

**January 2024**

Mon	Tue	Wed	Thu	Fri	Sat	Sun
25	26	27	28	29	30	31
1	2	3	4	5	6	7
8	9	10	11	12	13	14
15	16	17	18	19	20	21
22	23	24	25	26	27	28
29	30	31	1	2	3	4

**February 2024**

Mon	Tue	Wed	Thu	Fri	Sat	Sun
29	30	31	1	2	3	4
5	6	7	8	9	10	11
12	13	14	15	16	17	18
19	20	21	22	23	24	25
26	27	28	29	1	2	3
4	5	6	7	8	9	10

**March 2024**

Mon	Tue	Wed	Thu	Fri	Sat	Sun
26	27	28	29	1	2	3
4	5	6	7	8	9	10
11	12	13	14	15	16	17
18	19	20	21	22	23	24
25	26	27	28	29	30	31
1	2	3	4	5	6	7

**April 2024**

Mon	Tue	Wed	Thu	Fri	Sat	Sun
25	26	27	28	29	30	31
1	2	3	4	5	6	7
8	9	10	11	12	13	14
15	16	17	18	19	20	21
22	23	24	25	26	27	28
29	30	1	2	3	4	5

**May 2024**

Mon	Tue	Wed	Thu	Fri	Sat	Sun
22	23	24	25	26	27	28
29	30	1	2	3	4	5
6	7	8	9	10	11	12
13	14	15	16	17	18	19
20	21	22	23	24	25	26
27	28	29	30	31	1	2

**June 2024**

Mon	Tue	Wed	Thu	Fri	Sat	Sun
27	28	29	30	31	1	2
3	4	5	6	7	8	9
10	11	12	13	14	15	16
17	18	19	20	21	22	23
24	25	26	27	28	29	30
1	2	3	4	5	6	7

**July 2024**

Mon	Tue	Wed	Thu	Fri	Sat	Sun
24	25	26	27	28	29	30
1	2	3	4	5	6	7
8	9	10	11	12	13	14
15	16	17	18	19	20	21
22	23	24	25	26	27	28
29	30	31	1	2	3	4

**August 2024**

Mon	Tue	Wed	Thu	Fri	Sat	Sun
29	30	31	1	2	3	4
5	6	7	8	9	10	11
12	13	14	15	16	17	18
19	20	21	22	23	24	25
26	27	28	29	30	31	1
2	3	4	5	6	7	8

**Term Lengths**

Autumn Half Term

- 7 Sep - 20 Oct

Half Term to Christmas

- 6 Nov - 15 Dec

Winter Half Term

- 3 Jan - 9 Feb

Half Term to Easter

- 19 Feb - 28 Mar

Spring Half Term

- 15 Apr - 24 May

Summer Half Term

- 3 Jun - 19 Jul

**Key**

Holiday

Bank Holiday